

Tata Consultancy Services : Portfolio Report

Introduction

Tata Consultancy Services Limited (TCS) is an information technology (IT) services provider headquartered in Mumbai, India, and a subsidiary of the Tata Group. It has 67 subsidiaries and operates in 46 countries worldwide. ^[1]

One of the largest Indian companies and the largest IT services provider, TCS serves various business segments such as manufacturing, BFSI (banking, finance and insurance services), retail and consumer packaged goods (CPG), media and entertainment, telecom, resources and utilities, energy, healthcare and life science, transportation and hospitality, and e-Governance. ^[2] Its product and service offerings include enterprise software, business process outsourcing, consulting, software management, application development, payment processing, capacity planning, technology education services, and hardware sizing. TCS MasterCraft (IT delivery automation) and TCS BaNCS (banking software suite) are its best-known software products. ^[1]

In 2013, the TCS brand was placed among the most valuable global IT services brands. Last year, the company was ranked 10th in the Fortune world top 500 IT services providers list. It is the first Indian IT company to reach a market capitalization of US\$ 100 billion in April 2018. ^[1] This report takes a closer look at the patent assets held by TCS that are currently in force. It includes a portfolio taxonomy and provides insights into various aspects of the overall portfolio.

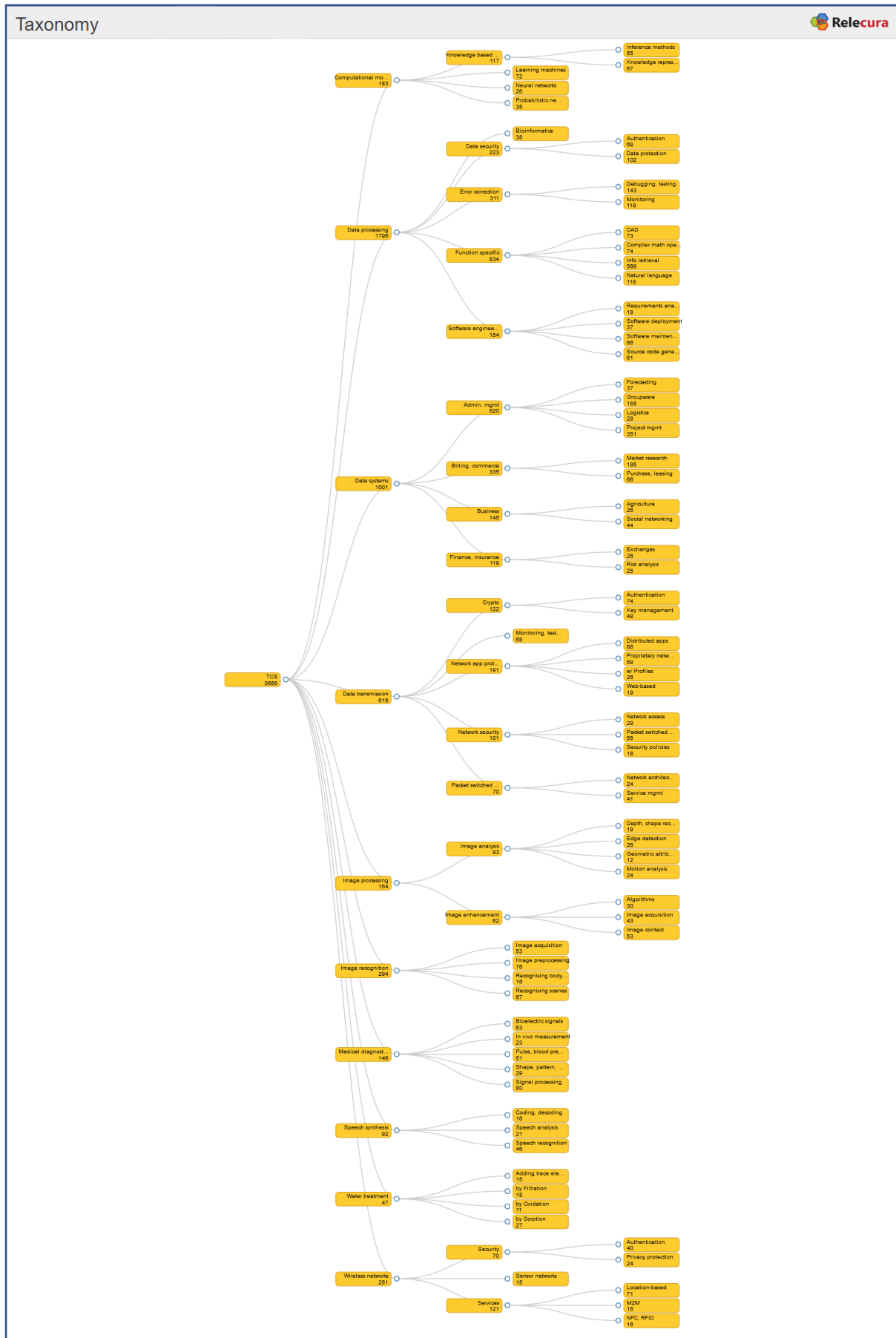
Contents

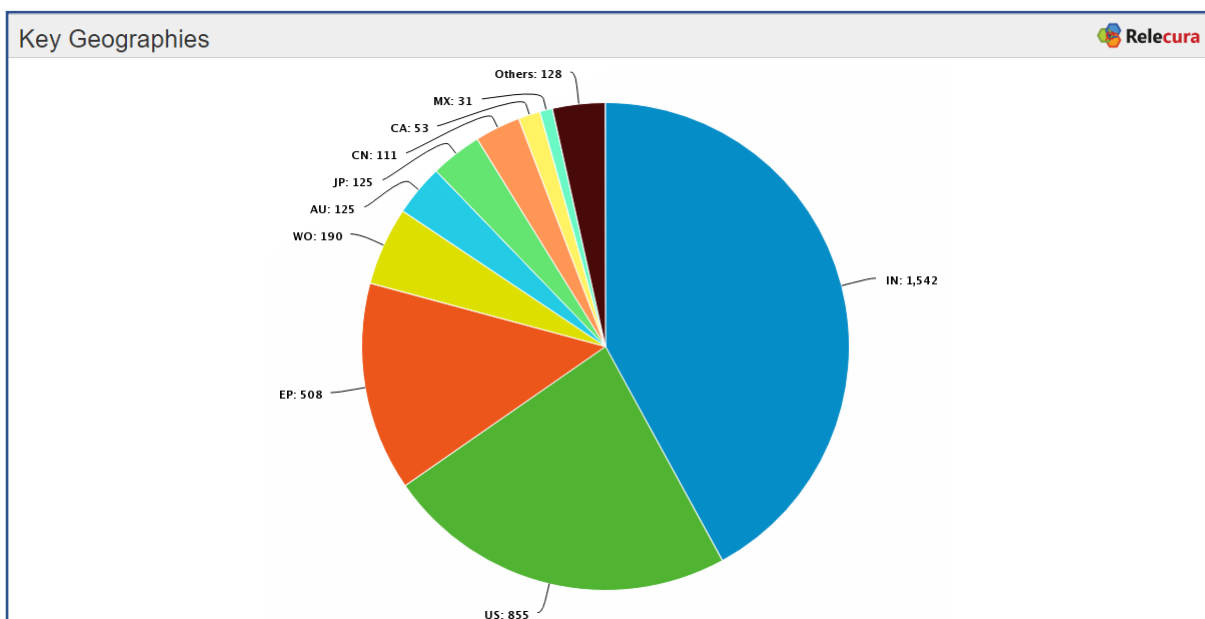
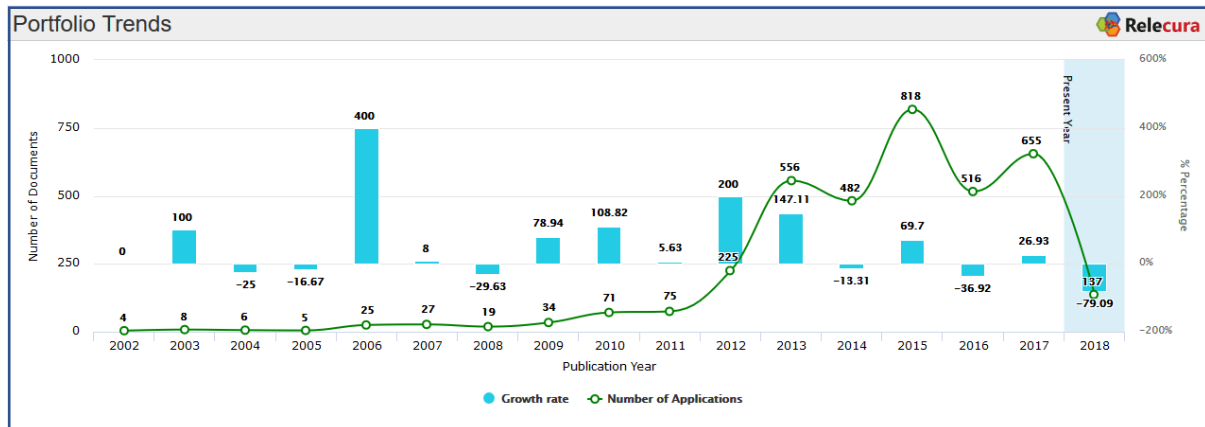
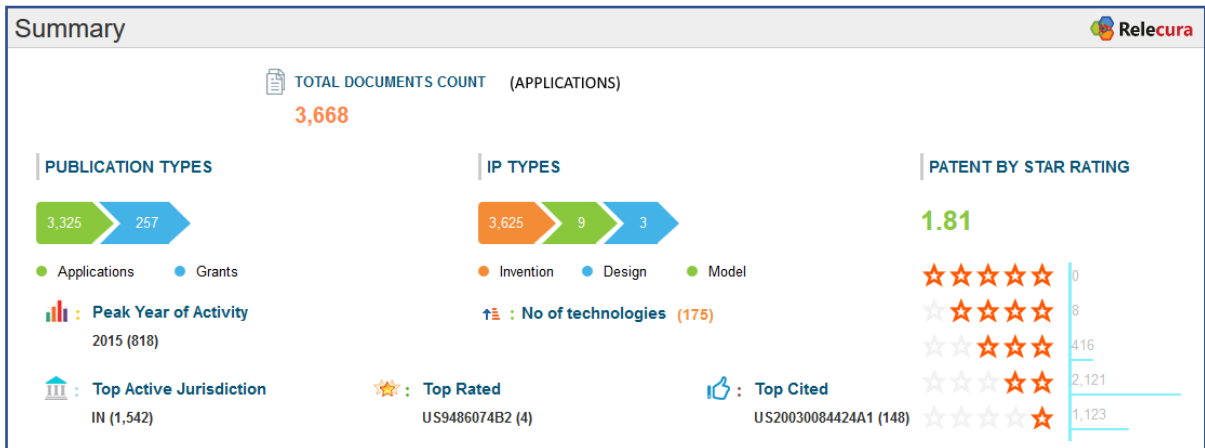
- Taxonomy
- Summary
- Portfolio trends
- Key geographies
- Key technologies
- Evolution of key technologies
- Analysis of key technologies
- Patent quality
- Key patents
- Top forward citing (FC) assignees
- Technology focus of FC assignees
- Topic Map - Concepts

Sources

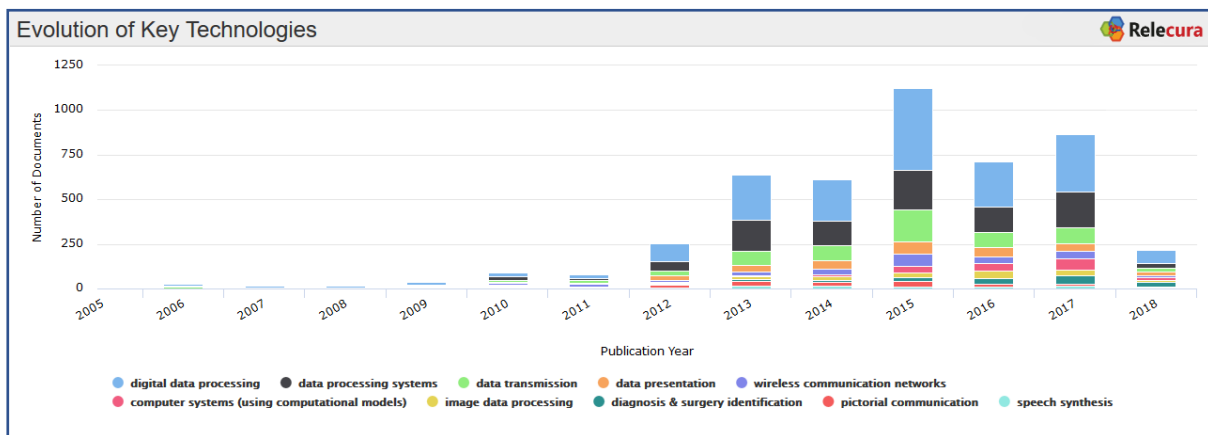
[1. Tata Consultancy Services \(Wikipedia\)](#)

[2. Tata Consultancy Services \(Reuters\)](#)

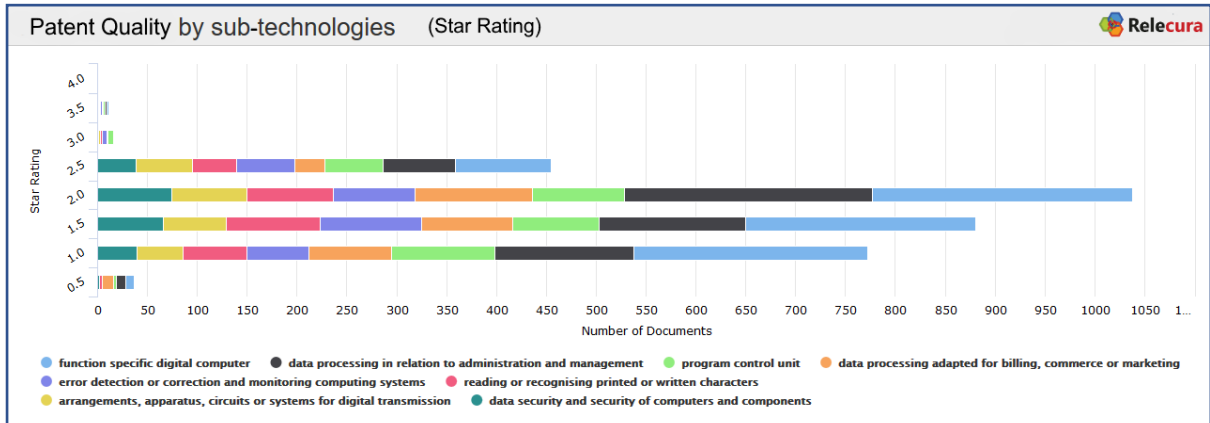




Key Technologies		Relecura
Technologies	# Applications	
Function specific digital computer	821	
Data processing in relation to administration and management	618	
Program control unit	334	
Data processing adapted for billing, commerce or marketing	333	
Error detection or correction and monitoring computing systems	306	
Reading or recognising printed or written characters	287	
Arrangements, apparatus, circuits or systems for digital transmission	224	
Data security and security of computers and components	221	
Communication protocols supporting network applications	191	



Analysis of Key Technologies				Relecura
Technologies	Applications	Grants	Sub Technologies	Geographies
digital data processing	1633	123	function specific digital computer (828) , program control unit (336) , error detection or correction and monitoring computing systems (309) , data processing in relation to administration and management (284) , data security and security of computers and components (223)	IN (717) , US (453) , EP (263) , WO (77) , AU (71)
data processing systems	945	39	data processing in relation to administration and management (618) , data processing adapted for billing, commerce or marketing (333) , function specific digital computer (225) , data processing adapted for business sector (144) , data processing adapted for finance, insurance, tax strategies (118)	IN (306) , US (296) , EP (173) , AU (58) , WO (38)
data transmission	540	50	arrangements, apparatus, circuits or systems for digital transmission (231) , communication protocols supporting network applications (191) , data switching networks (165) , cryptographics for secret digital communication (121) , data processing in relation to administration and management (103)	IN (167) , US (157) , EP (102) , WO (46) , CN (38)
data presentation	265	34	reading or recognising printed or written characters (294) , image analysis (68) , function specific digital computer (48) , image analysis or enhancement (45) , medical diagnostics (33)	IN (85) , US (79) , EP (64) , WO (29) , JP (24)
wireless communication networks	211	27	providing wireless communication services to user via network (120) , security arrangements, authentication, protecting privacy for wireless communication (70) , communication protocols supporting network applications (56) , arrangements, apparatus, circuits or systems for digital transmission (55) , cryptographics for secret digital communication (44)	IN (63) , US (57) , EP (45) , WO (22) , CN (16)

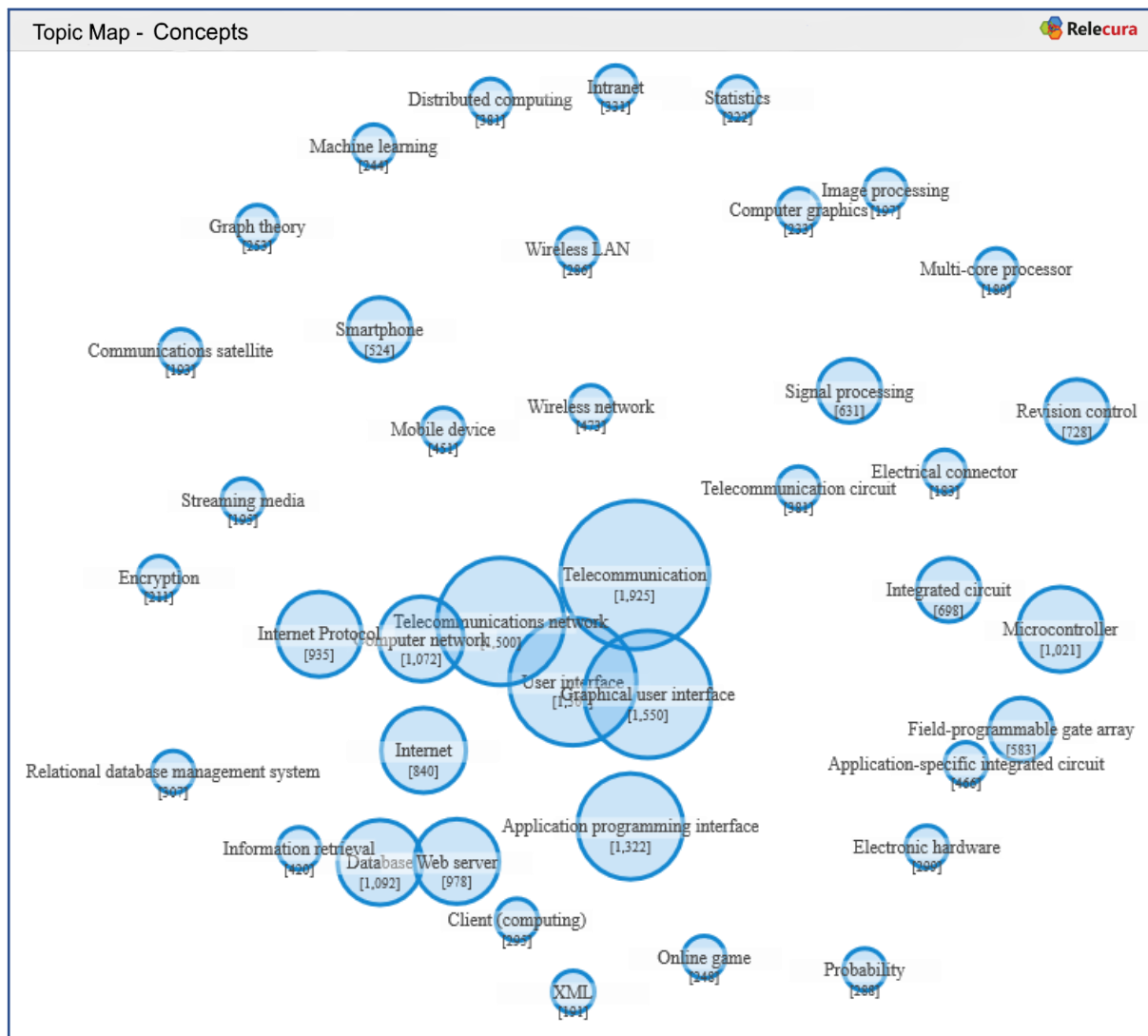
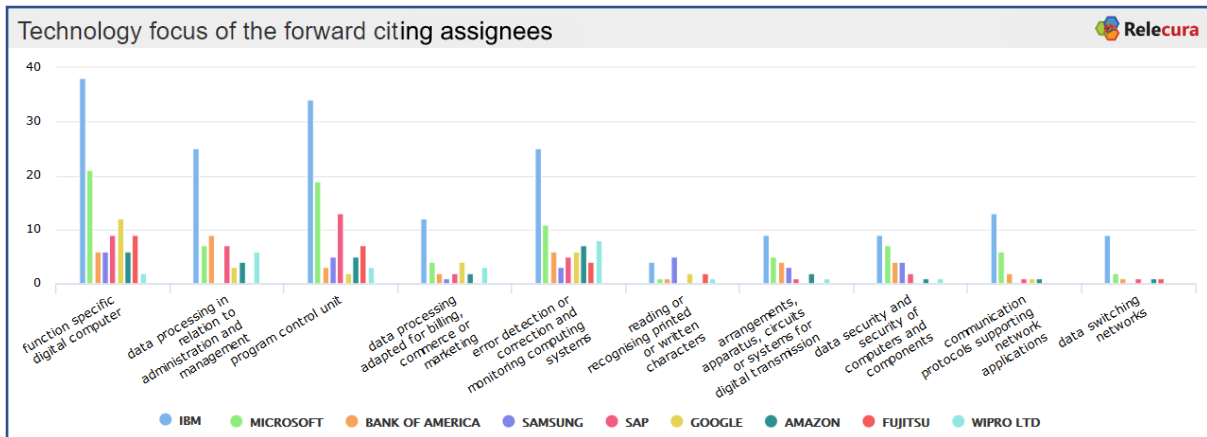


Key Patents in portfolio

Publication No.	Title	Inventor	Filing Date	Star Rating	#Fwd Citations
US9486074B2	Enclosure for biometric sensor	Shalin Garg, Vibhor Goswami, Sathish Vallat, Natarajan Ganapathy Subramaniam	2012-12-26	4.0	51
USD759061S1	Display screen or a portion thereof with animated graphical user interface	Nikhil Sahoo, Annie Thomas, Harini Ramachandraiah, Anushka Soman, Shalin Garg, Sathish Vallat	2015-03-11	3.5	30
US6904588B2	Pattern-based comparison and merging of model versions	Sreedhar Sannareddy Reddy, Josyula Ramakrishna	2002-01-28	3.5	148
US9306905B2	Secure access to application servers using out-of-band communication	Prasanna Bidare	2012-12-15	3.5	40
US20140359552A1	Computer Platform for Development and Deployment of Sensor Data Based Applications and Services	Prateep Misra, Arpan Pal, Balamuralidhar Purushothaman, Chirabrata Bhaumik, Deepak Swamy, Venkatramanan Siva Subrahmanian, Debnarayan Kar, Soumitra Naskar, Sumanta Ghosh, Suman Adak	2012-09-18	3.5	36

Top Forward Citing Assignees

FC Assignees	# Applications
IBM	131
MICROSOFT	56
BANK OF AMERICA	29
SAMSUNG	28
SAP	28
GOOGLE	25
AMAZON	21
FUJITSU	21
WIPRO LTD	21



[Click here](#)

To set up your **Relecura** account

Disclaimer

This document is provided for information purposes only and the contents hereof are subject to change without notice. This document, including the information and analysis and any opinion or recommendation, is neither legal advice nor intended for investment purposes. This document is not warranted to be error-free, nor subject to any other warranties or conditions, whether expressed orally or implied in law, including implied warranties and conditions of merchantability or fitness for a particular purpose. Relecura Inc. specifically disclaims any liability with respect to this document and no contractual obligations are formed either directly or indirectly by this document.

About Relecura

Relecura is a full-stack cognitive cloud platform that provides custom intelligence and reports on patent portfolios, technologies and companies. It does this by capturing and organizing the knowledge from various document repositories (patents, scientific literature) and subject matter experts in a flexible and collaborative manner, into a knowledge-base.

Relecura offers IP analytics tools and a custom enterprise platform to corporations, law firms, IP services firms, R&D organizations and academic institutions. The enterprise platform integrates the discovery and analysis of public documents with internal company documents. Relecura also has an API to help create custom tools for IP and business intelligence.